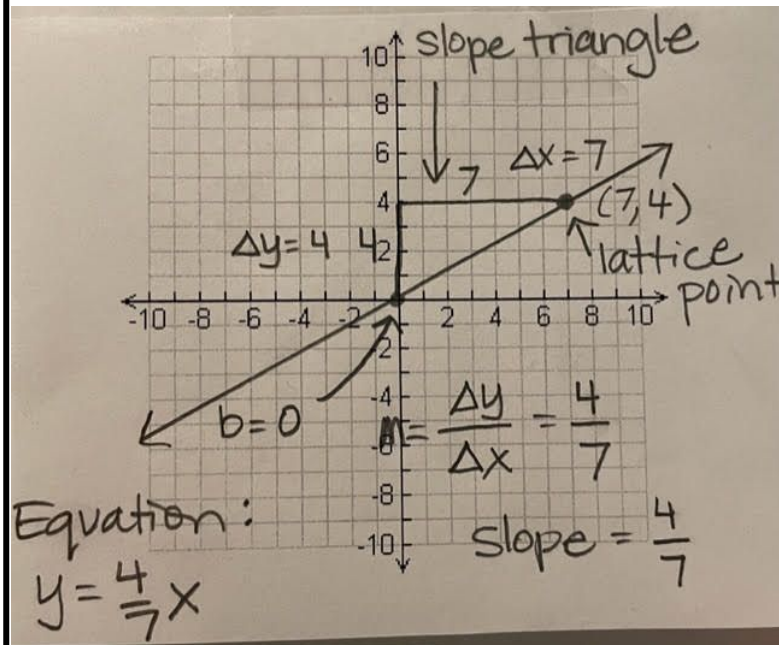


# y=mx+b and Slope Notes

## Important Information

- Variables-letters that represent numbers.
- y-output
- m-slope, growth,  $\frac{\text{rise}}{\text{run}} = \frac{\Delta y}{\Delta x}$
- x-input
- b- the y-intercept (where the graph crosses the y-axis)

## Examples



## Things to remember!

- Lattice Point- a point on a graph such that the x and y coordinates are whole numbers.
- $\Delta y$ - read "change in y" or delta y, is the vertical distance of a slope triangle (aka rise).
- $\Delta x$ - read "change in x" or delta x, is the horizontal distance of a slope triangle (aka run).

## More Examples

- **What effect does m have on a graph of a line?**
- **What effect does b have on a graph of a line?**

